

GETTING
STARTED WITH



**Getting the
Most From
Your One
Degree
Experience**





Checklist for Getting Started

Intro to One Degree

- Our Mission & Approach
- Welcome to One Degree Pro Training

Getting Set Up

- Creating and Connecting Your Account
- Search and Filter Resources
- Sending Referrals
- Your Client's View of One Degree
- Bookmarks and Collections
- Using the Resource Editing Tool

Promoting One Degree

- Ordering Materials and Adding Badges
- Downloading the App



What is One Degree?

One Degree is a searchable database of community resources in SF Bay Area and Los Angeles.





One Degree's Mission:

Empower individuals to create
a path out of poverty for themselves
and for their communities.

Built for People

Our first and foremost priority is to put our members at the heart of what we're doing.



Private and Secure

We take security extremely seriously and have protocols in place to protect our community.



**HIPAA
COMPLIANT**



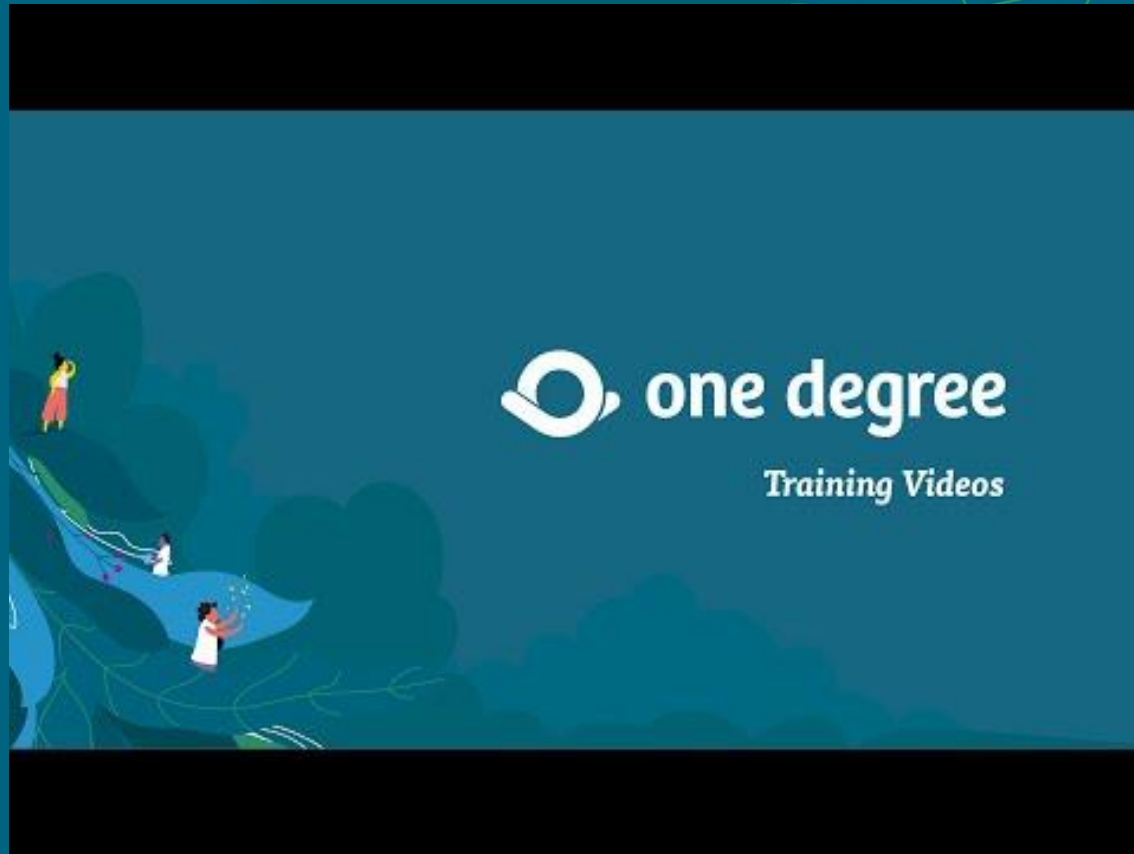
In this guide you'll learn how to:

- Create your FREE account
- Search and Share Resources
- Refer Resources to Clients and track their progress
- Share One Degree with your community
- Use One Degree to promote your organization's programs

[Review FAQs](#)

[FAQs](#)
(Español)





Welcome to One Degree Pro Training

GETTING
STARTED WITH
 one degree

Getting Set Up: Community Support Made Simple



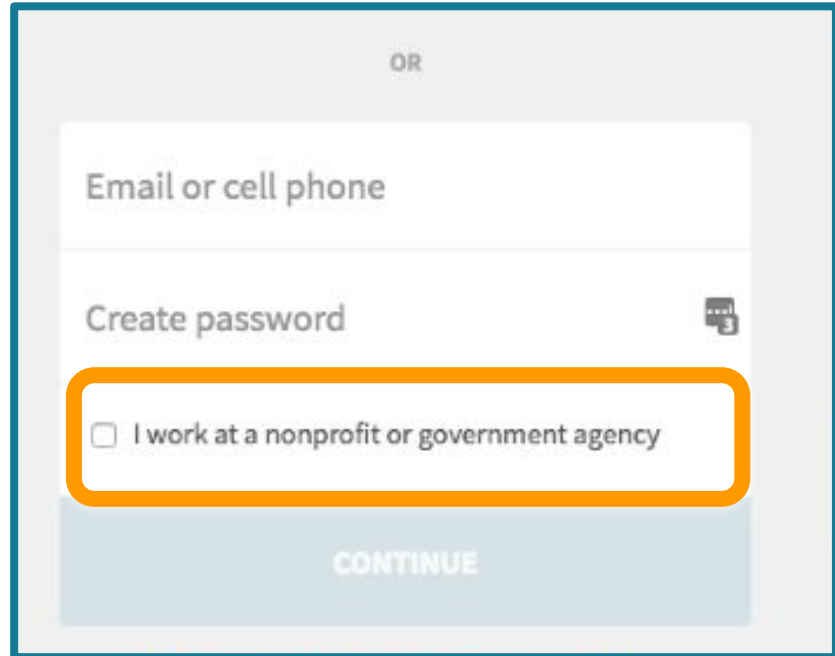


Need help with this? Email us at help@1degree.org




Follow these
next steps:

- Go to www.1degree.org now to set up your account



OR

Email or cell phone

Create password 

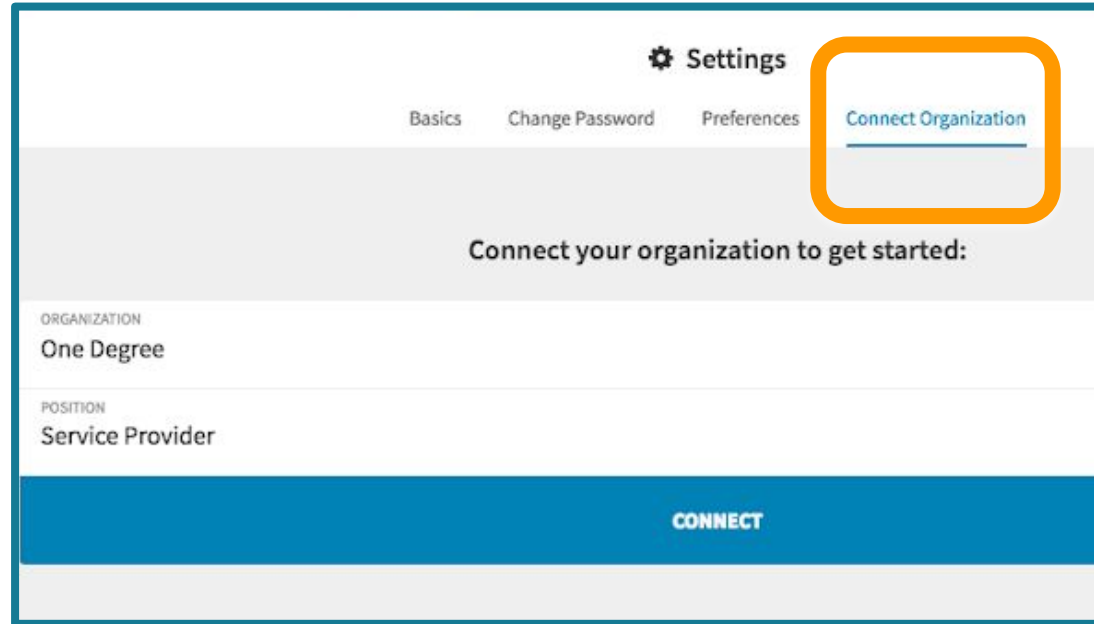
I work at a nonprofit or government agency

CONTINUE

The image shows a registration form with a light gray background. At the top, the word "OR" is centered. Below it are three input fields: "Email or cell phone", "Create password", and a checkbox labeled "I work at a nonprofit or government agency". The checkbox is highlighted with a thick orange border. At the bottom of the form is a light blue button labeled "CONTINUE".

Follow these
next steps:

- Connect your organization



The screenshot shows a user interface for a 'Settings' page. At the top right, there is a gear icon followed by the text 'Settings'. Below this, there are four navigation options: 'Basics', 'Change Password', 'Preferences', and 'Connect Organization'. The 'Connect Organization' option is highlighted with a blue underline and an orange rounded rectangular box. Below the navigation bar, the text 'Connect your organization to get started:' is centered. Underneath, there are two input fields: 'ORGANIZATION' with the value 'One Degree' and 'POSITION' with the value 'Service Provider'. At the bottom of the form, there is a large blue button labeled 'CONNECT'.

Settings

Basics Change Password Preferences Connect Organization

Connect your organization to get started:

ORGANIZATION
One Degree

POSITION
Service Provider

CONNECT



Need help with this? Email us at help@1degree.org



Nice work!
Now try it out:

- **Start searching for resources**
- **Note the opportunities available in each category**
- **Test out the filter options to refine your search**

Need help with this? Email us at help@1degree.org





one degree

Training Videos

Need help with this? Email us at help@1degree.org

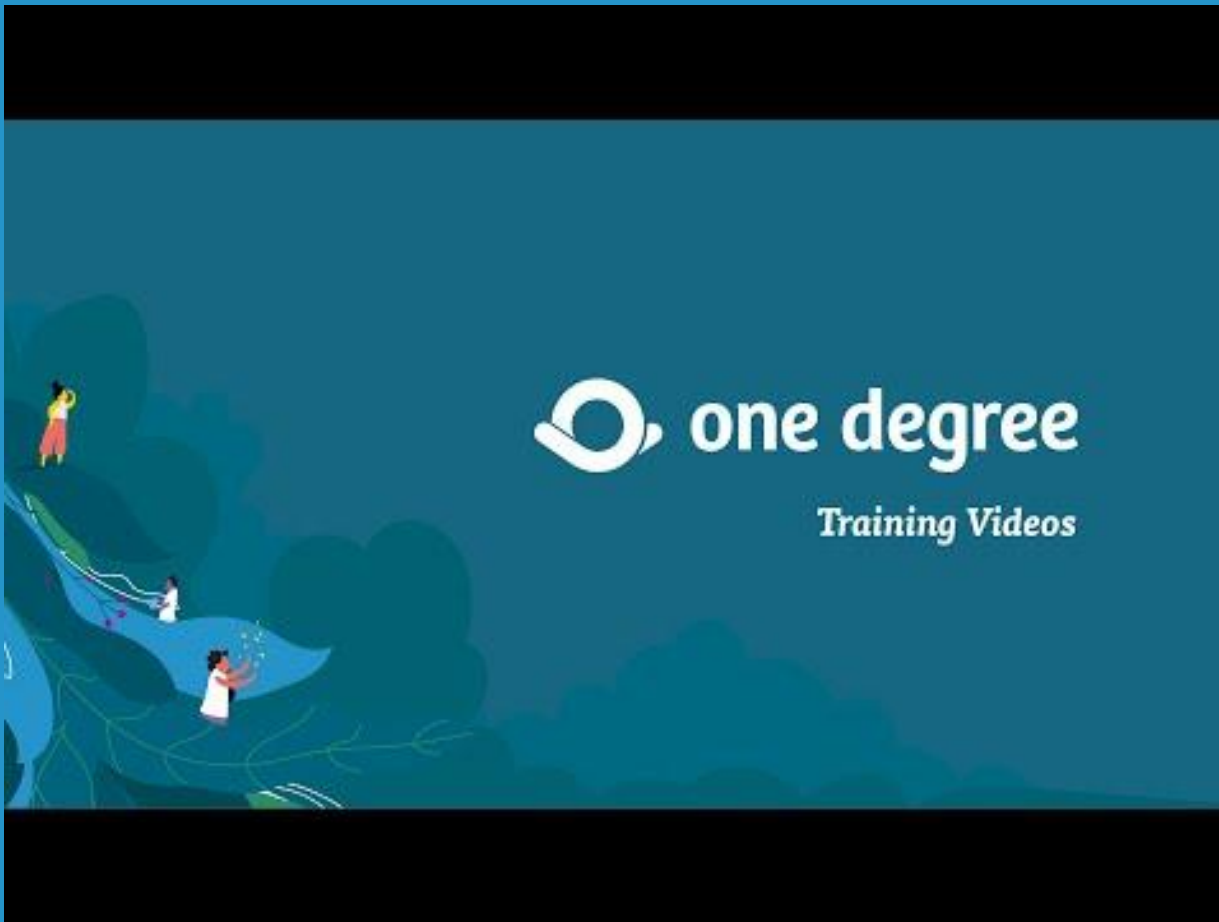
**You're getting
the hang of this.**

Next steps:

- **Try out the refer feature to send a resource to a client**
- **Review the client referral page and the update options**

Need help with this? Email us at help@1degree.org





Need help with this? Email us at help@1degree.org



Next steps:

- Encourage your clients to create an account so they can use MyPlan to:
- Save resources in one place
- Update their progress and leave ratings and reviews
- Take risk assessments and be recommended more resources

Need help with this? Email us at help@1degree.org



The logo for 'one degree' features a white circular icon with a stylized 'd' shape inside, followed by the text 'one degree' in a white, lowercase, sans-serif font. Below this, the words 'Training Videos' are written in a smaller, white, italicized sans-serif font. The background of the video frame is a dark teal color with a faint illustration of a landscape with a path and figures.

one degree
Training Videos

Need help with this? Email us at help@1degree.org

Ready to level up?

Next steps:

- Try bookmarking a resource
- Save and add a resource you've found to a collection
- Name your collection and indicate who should see it
- Bonus: Add a category and save resources to it

Need help with this? Email us at help@1degree.org





Need help with this? Email us at help@1degree.org



You're Next Level!

Next steps:

- Review your organization's page on One Degree and make edits as necessary
- If your organization is not on One Degree, begin adding it
- Be sure to invite your teammates to add information and opportunities to the page

Need help with this? Email us at help@1degree.org



GETTING
STARTED WITH
 one degree

**Promoting One Degree
With your Clients +
Community**



The logo for 'one degree' features a stylized white icon of a person's head and shoulders, composed of a circle and a curved line. To the right of the icon, the words 'one degree' are written in a white, lowercase, sans-serif font. Below this, the words 'Training Videos' are written in a smaller, white, italicized, sans-serif font. The background of the logo area is a dark teal color with a faint illustration of three people walking on a path through a forest.

one degree
Training Videos

[Order Materials](#)

[Get Badges Here](#)

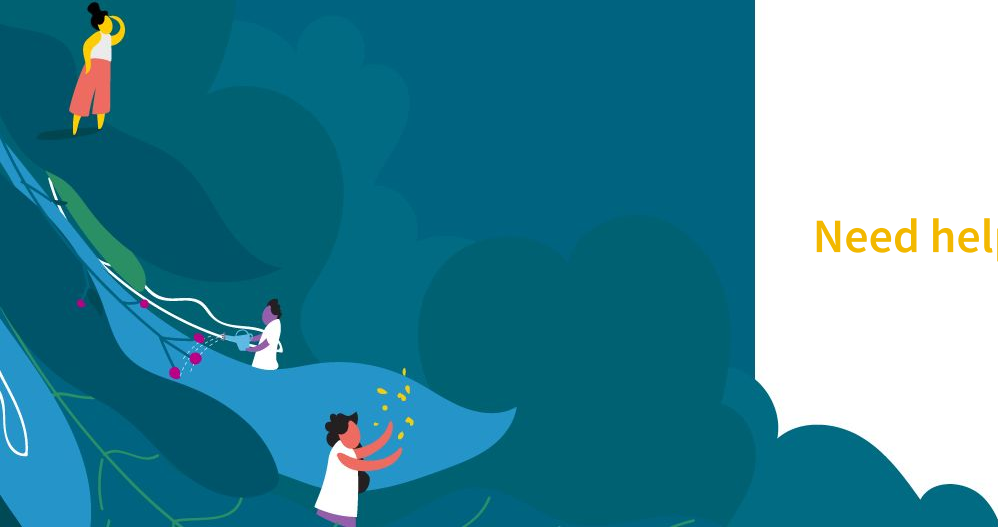
Need help with this? Email us at help@1degree.org

Congratulations, you've completed training!

Next Steps:

- Order free materials to share
- Review the badge options
- Download the free One Degree app

Need help with this? Email us at help@1degree.org



Get the free One Degree App

Find and save resources 24/7 from anywhere, **click** on the icons below to download



[App FAQ's](#)



Keep in Touch

Connect with us on LinkedIn

CONNECT WITH US

Subscribe to our Newsletter

SEE THE LATEST

Find us on Facebook

LIKE OUR PAGE



One Degree Training Videos

- General Info ([ENG](#) / [ESP](#))
- Community Tools ([ENG](#) / [ESP](#))
- Professional Tools ([ENG](#) / [ESP](#))
- Common App ([ENG](#) / [ESP](#))



Was this e-guide useful?

Please take our survey to let us know how useful this guide was and what we can do better.

[Eguide Survey](#)

